





ALPHA, вставка замка, для профильного полуцилиндра

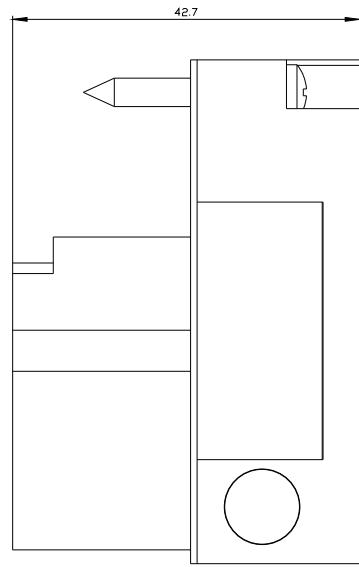
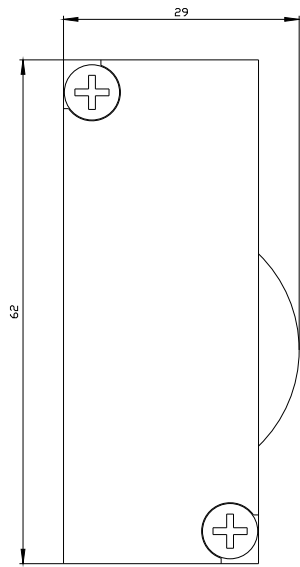
версия	
торговая марка изделия	ALPHA
наименование изделия	вставка замка
исполнение изделия	для профильного полуцилиндра
Механическая конструкция	
масса нетто	35 g

General Product Approval	Test Certificates	other
Confirmation 	Miscellaneous 	Special Test Certificate Confirmation

other	Environment
Miscellaneous	Environmental Confirmations

Дополнительная информация

Siemens has decided to exit the Russian market (see here).
<https://press.siemens.com/global/en/pressrelease/siemens-wind-down-russian-business>
Siemens is working on the renewal of the current EAC certificates.
 Please contact your local Siemens office on the status of validity of the EAC certification if you intend to import or offer to supply these products to an EAC relevant market (other than the sanctioned EAEU member states Russia or Belarus).
Информация об упаковке
[Информация об упаковке](#)
Information- and Downloadcenter (Catalogs, Brochures,...)
<http://www.siemens.com/lowvoltage/catalogs>
Industry Mall (Online ordering system)
<https://mall.industry.siemens.com/mall/ru/ru/Catalog/product?mlfb=8GK9561-0KK02>
Service&Support (Manuals, Certificates, Characteristics, FAQs,...)
<https://support.industry.siemens.com/cs/ww/ru/ps/8GK9561-0KK02>
Image database (product images, 2D dimension drawings, 3D models, device circuit diagrams, ...)
http://www.automation.siemens.com/bilddb/cax_en.aspx?mlfb=8GK9561-0KK02
CAX-Online-Generator
<http://www.siemens.com/cax>
Tender specifications
<http://www.siemens.com/specifications>



последнее изменение:

08.02.2023 

